

Engineering . Industry, transport of Energy, Connections

**E.ITEC®**

PRESENTATION  
SHEET

**S01A**

# Mastering high currents Water treatment solutions

## THE COMPANY

Incorporated in 2000 in the area of Saint-Etienne, France, E.ITEC® specializes in the design, the manufacturing and the installation of complete solutions for the transport of LV and HV high currents, all over the world.

In 2011, E.ITEC® created Linaë®, an innovative concept for the water treatment.

E.ITEC® focuses on people and counts on value based company philosophies which promote partnership, dialogue, quality and performance as well as the environmental protection by an approach of eco-conception.

E.ITEC® offers solutions meeting the specific needs of each customer using competencies of its engineers and dedicated means like 3D CAD or electromagnetic and thermal simulations software.

E.ITEC® is present all over the world with its sales officers' team supported by a local agents' network.

Today, E.ITEC® Group includes 2 subsidiaries for sales and repairs activities in Malaysia and India and an electromechanical installation company.



## ARC.ITEC™: energy to the heart of electric furnaces



**Power supply circuits for industrial furnaces** (Electric Arc Furnaces, Ladle Furnaces induction, graphitization, electrometallurgy, plasma furnaces):

- Water cooled cables
- Bustubes and delta closures
- Transformer flexible connections
- Electrode clamps and contact pads
- Conductive arms
- Insulating parts
- Support system
- Transformer primary HV bus ducts

## ITEC.BAR™: LV and HV power bus ducts systems

**LV an HV high power bus ducts systems**, ready for installation, optimized and customized for each project:

- ITEC.BAR™ GT: air insulated power LV bus ducts
  - ITEC.BAR™ GP: cast resin LV bus ducts
  - ITEC.BAR™ GV: HV tubular bus ducts
- ITEC.BAR™ GD: plug-in bus ducts and vertical risers
  - ITEC.BAR™ GS: special bus ducts and busbars
- ITEC.BAR™ glass: equipment and products for glassworks
  - ITEC.BAR™ gensets: bus ducts on generator sets
  - ITEC.BAR™ support: bus ducts support system



**E.ITEC®** - SAS with a capital of 90 000 Euros

ZAC du Bec - rue Lavoisier - 42500 LE CHAMBON FEUGEROLLES - FRANCE

Tel : +33 4 77 30 33 33 - Fax : +33 4 77 30 33 30 - E-mail: [contact@eitec.fr](mailto:contact@eitec.fr) - Web: [www.eitec.fr/en](http://www.eitec.fr/en)

December  
2015



page : 1

## INDUS.ITEC™: specific electrical connections



**Specific electrical connections** designed for specific needs of industrial process. The choice of technology and material is adapted to each project, respecting existing constraints in case of improvement of an existing equipment:

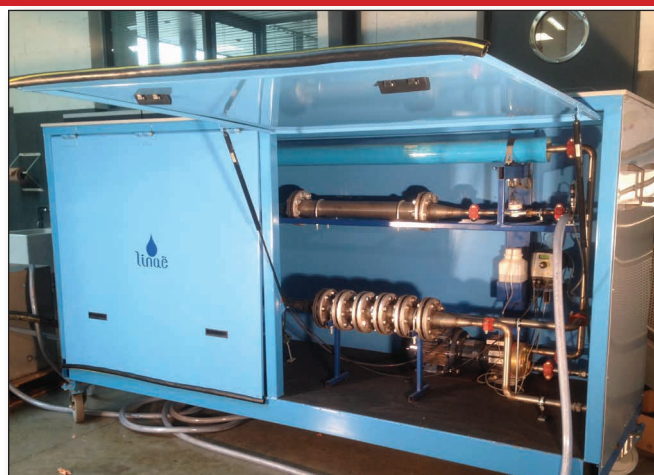
- High flexible cables
- Machined and welded parts
- Braids connections with crimped or welded ends
- Laminated connections
- Insulating parts
- Support system
- Special surface treatments

## LINAË®: water treatment systems

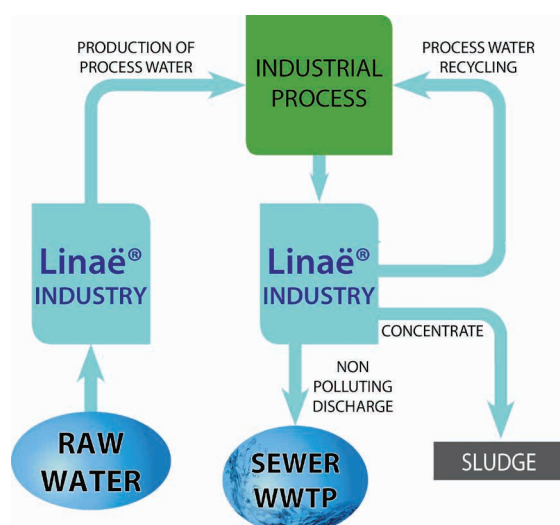
Willing to preserve the environment through an eco-design approach, E.ITEC® decided in 2011 to create Linaë®, an innovative concept for:

- Production of process water
- Process water recycling
- Decontamination of industrial waste water
- Purification of underground and surface water
- Desalinisation of sea and brackish water

Linaë® product range is made of stand-alone water treatment units, powered by traditional or renewable energy, which meet the needs of users, while taking into account economical and environmental parameters.



### Linaë® INDUSTRY: industrial water treatment



### Linaë® PURE: production of drinkable water

