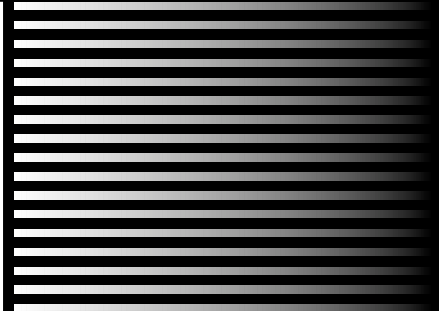


GATHERER ROBOT R6X6

6 Axis robot for day-tanks and pot furnaces - *load capacity : 6 Kg of glass*

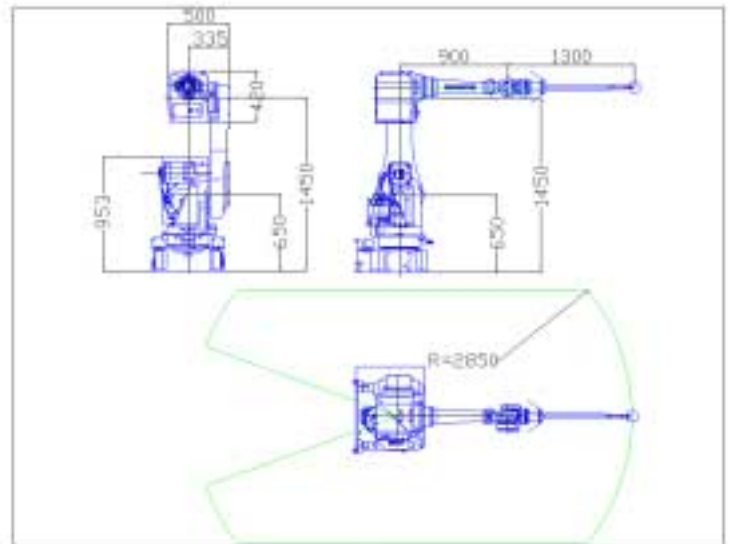
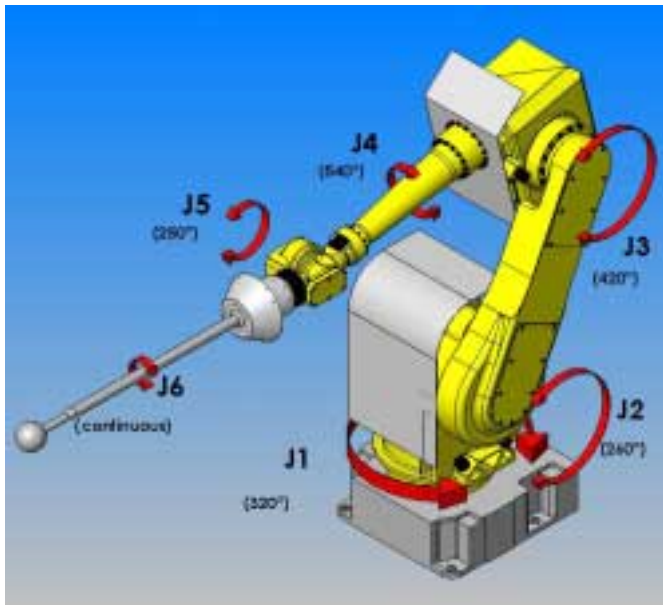
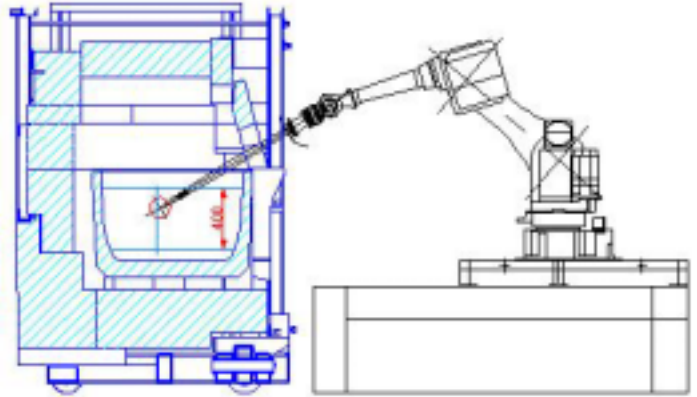


Specifications

- 6-axis poly-articulated robot.
- Driven by air cooled brushless motors (Alternative Current without brushes) featuring strong coupling capability, light inertia and high accelerations.
- Shortened cycles time thanks to the most advanced technologies (ultra-high resolution encoders).
- Direct coupling of motors on the axis.
- Driven by Fanuc's new and powerfull RJ-3iB controller.
- Programmed thanks to a user-friendly teach-pendant; backlighting LCD screen display unit.
- Possibility to store up to 100 different programs in the memory or on PCMCIA cards.
- Gathers glass up to 6 kg of glass from all type of furnaces.
- Follows down the level of glass thanks to a special software.
- Can supply glass gobs into moulds higher than the furnace glass level.
- Can feed up to 4 forming machines simultaneously.
- Gathering lance with interchangeable nose, cooled by soften water.
- Extremely reduced maintenance.

Advantages

- Soft movements reproducing the hand-gatherer way.
- Very high speed combined with high precision.
- Simple programming method.
- No need of glass level sensor.
- Short production changes.
- Easily movable from one furnace to another.
- Gathers high quality glass gobs.
- Spare-parts in stock.
- After-sale service all over the world.



Technical Data

Items		Data
Robot type		Articulated type
Controlled axis		6 axis (J1, J2, J3, J4, J5, J6)
Installation		Floor mounted
Motion range (max. speed)	J1 axis rotation	320° - 160°/sec
	J2 axis rotation	260° - 120°/sec
	J3 axis rotation	420° - 150°/sec
	J4 axis rotation	540° - 240°/sec
	J5 axis rotation	250° - 240°/sec
	J6 axis rotation	continuous - 0 to 150 r.p.m
Weight of glass gathered		up to 8 kg
Operation rates		Up to 10 pieces.minute-1
Allowable torques	J4 axis	176 N.m
	J5 axis	176 N.m
	J6 axis	98 N.m
Motors type		Electrical servo driven by AC servo motor
Processor system		Dual RISC – 64 bit
Data memory		Flash 16 MB - expandable
Repeatability		+ / - 0.07 mm
Robot Weight		400 kg
Control board weight		200 Kg
Environnement		Ambient Temperature : 0-50°C
Consumptions		
Robot : Power supply	7 KW	380V / 415V three-phases - 50 / 60 Hz
Cooling water		200 liters.hour-1 at 1,5 bar