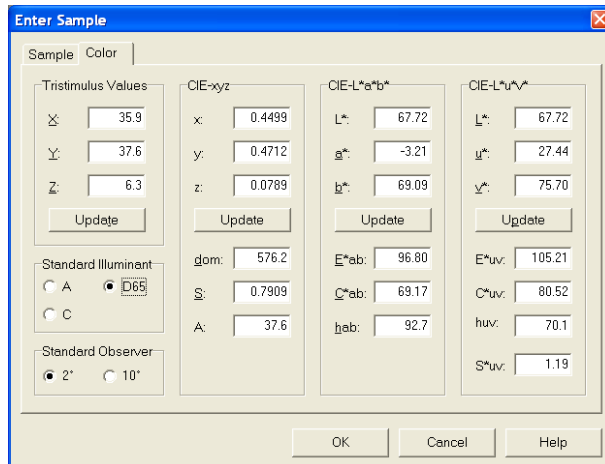


PRISMA 2008

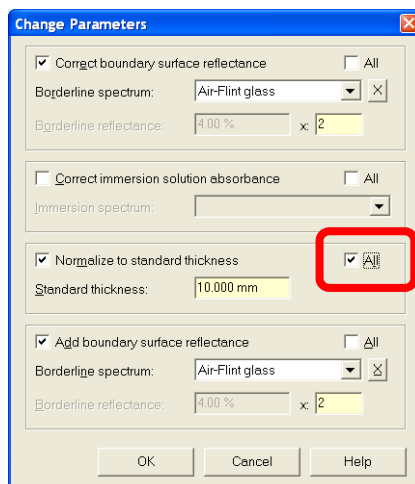
Major Changes since the Previous Version PRISMA 2006

As at 2008-02-06

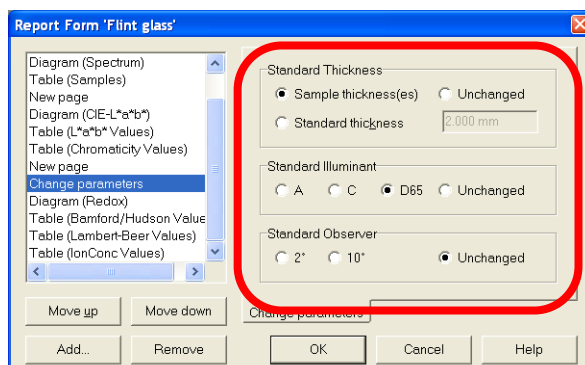
- With the "Enter Sample" command in the Prisma menu it is possible to manually enter color values and archive them as samples or standards.



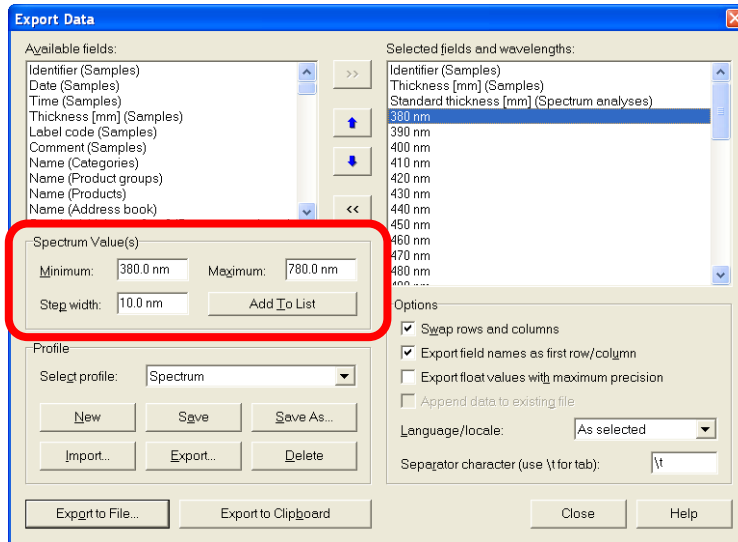
- Changes of calculation parameters can optionally be applied to all measurements visible in a diagram.



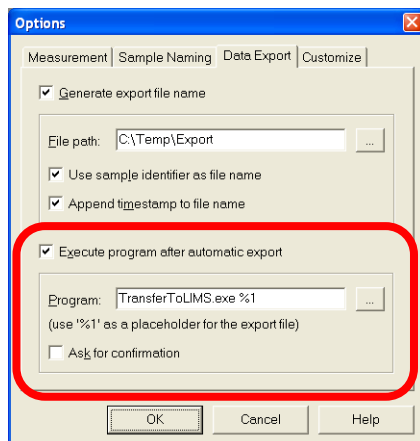
- In report forms, the standard thickness can be reset with the "Change parameters" report element. The sample element also allows changing the standard illuminant or the colorimetric observer within a report.



- When creating statistics or data export profiles, a whole wavelength range can be added at once.



- After the automatic data export an arbitrary program can be run to further process the data (e.g. transfer to the QA system).



- In the "Rename/Change" window it is now possible to change the category, etc. for multiple samples at once.
- On demand, the spectral values T_V/R_V , T_e/R_e , T_{UV} and R_a (EN 410, ISO 9050) can be calculated even if the measured spectrum covers the necessary wavelength range only partly.
- When adding or hiding measurements in diagrams the other curves or points keep their colors.
- The sample thickness can be entered subsequently with the "Rename/Change" archive command.
- The sample's label code and comment can be displayed in diagram legends and reports.